

carchip[®] E/X

On-board diagnostics (OBDII) data was once available only to professional mechanics. With CarChip, this same data is now in your hands.

Take the guesswork out of diagnosing engine problems.



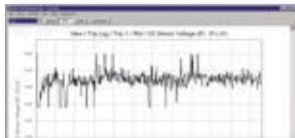
- Read diagnostic trouble codes and “freeze-frame” sensor readings.
- Zero-in on intermittent problems by monitoring selected engine parameters—choose any 4 out of 23 possible.
- Clear your car’s check engine light.

Don’t wait for a speeding ticket—or worse—to see how your teen is driving.



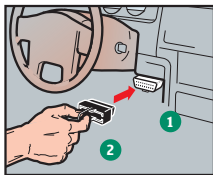
- Set thresholds for speed, acceleration, and braking, and see when they were exceeded.
- View summary and detail reports for each trip, with time, date, speed, distance, and more.
- Use to set up your own “Graduated License” program based on driver performance.

Save time and money, and help save the environment, too.



- Fine-tune engine performance by monitoring selected parameters—you’ll burn less gas and exhaust fewer pollutants.
- Use detailed speed report to fight an unjust ticket.
- Accident log (the last critical 20 seconds of speed) may help settle a contested insurance claim.

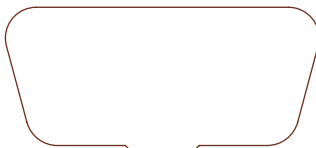
Easy Plug-and-Go installation



1. Locate your car’s OBD II connector. You’ll find it within 3 feet of the driver’s seat.
2. Plug in CarChip. CarChip will start logging data immediately.

Easy instructions for data download to your PC are included.

Plugs instantly into your car or truck!



Monitor any 4 out of 23 possible engine parameters, recorded every 5 to 60 seconds.

- | | | | |
|-----------------------|----------------------------|------------------------|-------------------------|
| • RPM | • Intake Manifold Pressure | • Fuel Pressure | • Long-Term Fuel Trim |
| • Throttle Position | • Air Flow Rate | • Fuel System Status | • Oxygen Sensor Voltage |
| • Engine Load | • Intake Air Temperature | • Short-Term Fuel Trim | • Battery Voltage |
| • Coolant Temperature | • Timing Advance | | |

Made in USA by DriveRight, a division of Davis Instruments.

DAVIS
Davis Instruments

3465 Diablo Avenue
Hayward, CA 94545 USA
www.davisnet.com

U.S. Patent No. 6,629,029



e11
022816

Includes

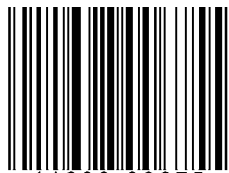
- CarChip Data Logger
- Software on CD
- USB Cable for Downloading Data

Vehicle Requirements

For most cars and trucks sold in USA & Canada, model-years 1996 and later. (Vehicles sold elsewhere may or may not be compliant.) See our website, www.carchip.com, for details.

PC Requirements

Windows 98SE/2000/ME/XP and USB port.



0 11698 00675 5

8221 CarChipE/X

Warranty. All items are warranted to be free of defects in material or workmanship for one year from date of original purchase. See complete details on reverse side.

Important Safety Notice. CarChip has been carefully designed and tested to comply with OBDII protocols J1850-41.6, J1850-10.4, ISO9141, KWP2000 (ISO14320), and CAN (ISO11898). However, some vehicle models are not in full compliance with these protocols. In addition, the computer control systems on an given vehicle may be malfunctioning or out of spec, as may be the sensors used by these systems. Before installing CarChip, be sure to review the list of known exclusions and anomalies on our website, www.carchip.com.